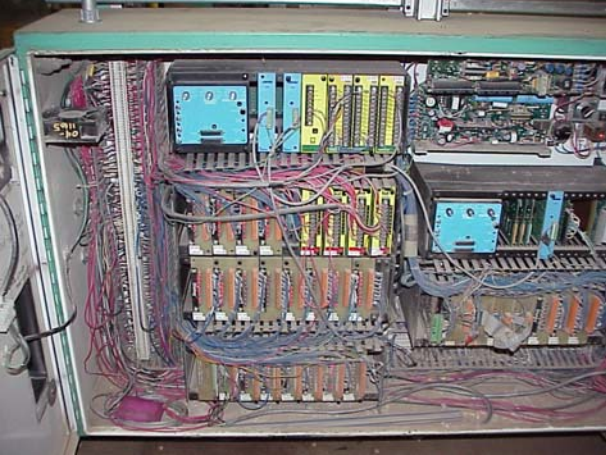
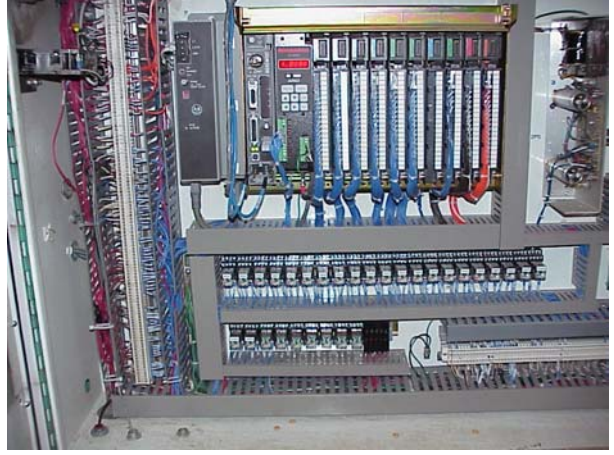


# KRAKEN Packaging Machinery Upgrades/Relocates- Control System Conversion Services

## Before



## After



Packaging machines are an integral part of any manufacturing facility. As integral as they are, however, justifying capital expenditures to replace existing machines with new is an arduous and time-consuming task. A reasonable alternative is to upgrade the existing mechanical systems, complemented with new, state of the art machine control. Kraken Automation Inc. (KAI) can provide customers with this service in modular, or complete turn key packages.

KAI has provided a number of customers with complete packaging machine upgrades.

**All rebuilds and upgrades are directed by KAI's experienced staff.**

*The services provided in these upgrades can be categorized into two main areas, namely Electrical and Mechanical, and comprise of:*

### Electrical

- Design engineering to convert older control platforms to new. Specifically, KAI has converted several G&L control platforms supplied by Jones to client PLC (A/B, Modicon, etc.) systems standards.
- Provision of a comprehensive set of electrical and component layout drawings.
- Control panel upgrade by pre-assembly of panel back plates with required control components and wiring. This is a more efficient technique where site installation time is critical, and installation costs must be minimized.
- Upgrade of the existing machine positioning system to a high resolution, resolver unit coupled with an interface module fully compatible with a PLC (AMCI).
- Complete cartoning system sensor upgrades to client/plant standards, complete with quick connection systems.



## Engineering Services Innovative Packaging Solutions and Factory Automation Specialists

- Migration of proprietary, or mature platform operator interfaces to fixed or portable HMI systems, integrated to plant networks.

### Mechanical

- Where required, replacement of chains, gears, gearboxes, rollers, cams and cam followers with new components.
- Specialized upgrades of mechanical subsystems to enhance carton handling, such as.
- Roto-flow to Orbitrack conversions.
- Replacement of overhead sweeps to KAI servo based transfers, ensuring accurate, high speed bag transfer rates with reduced maintenance.
- Installation of air knives to replace airframe blowers eliminating motor and fan maintenance.
- Upgrade of mechanically timed assemblies with servo based technology.

### Machine Guarding



Before



After

### Other

- Complete upgrade and control capabilities for ancillary cartoning equipment, such as side seam gluing systems, vertical elevators, carton belt air conveying systems, case packing and robotic/mechanically tiered palletizing.
- Coordination of machine upgrades, either by providing KAI personnel for on site supervision of various trades, or with a full KAI crew, capable of complete electrical and mechanical retrofits.
- Comprehensive commissioning and training services for operations and maintenance personnel.
- Line audits and assessment of cartoner operation to define upgrade requirements and target efficiencies

KAI can customize components and design to your plant specifications. Moreover, KAI has expedited upgrades locally and internationally (Welwyn, England, and Harare, Zimbabwe) and is equipped to perform the required services in any locale.

[Contact us today for more information as to how Kraken Automation Inc. can assist you with your machinery Rebuild / Relocates / Conversion Services requirements.](#)

Tel: (905) 336-8089 or by  
Email: [kraken@krakenautomation.com](mailto:kraken@krakenautomation.com)