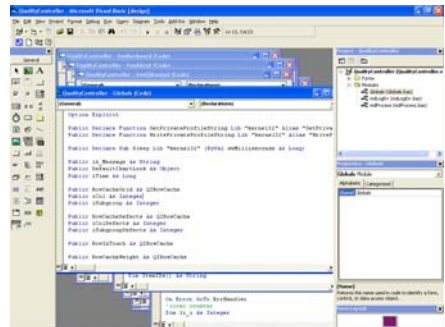
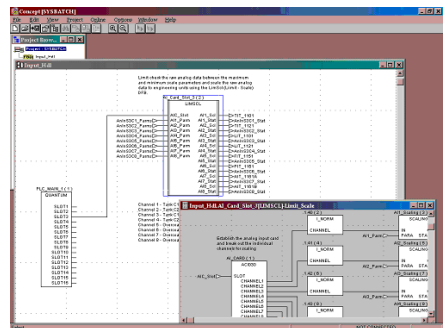
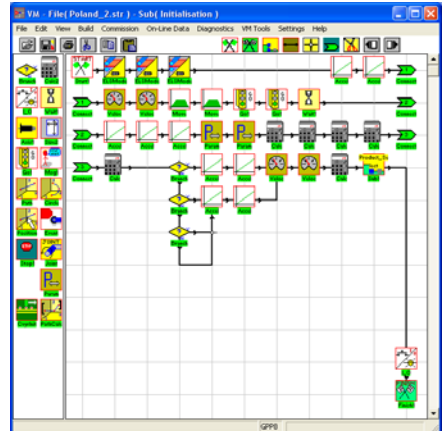
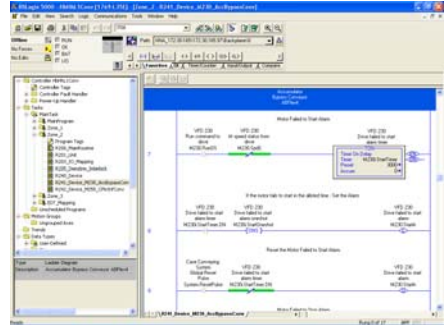


# KRAKEN Programming Services

Regardless of the automation intelligence used, Kraken Automation has the resources to program it.

Almost every automated system used in processing or packaging has some form of intelligent control kernel. Be it an RTU (Remote Terminal Unit), PLC (Programmable Logic Controller), IMC (Intelligent Motion Controller), or Soft PLC, Kraken Automation has the resources to provide any customer with the proper application, regardless of the programming language used. The varied resources that Kraken can provide in the area of programming are:

- Preparation of FSD documents (Functional System Description), which clearly defines the paradigm of the system to be programmed. This document provides a comprehensive listing of equipment involved in the control schema, tabular definitions of analog/discrete input/output data, definition of general operating modes, alarm handling, detailed subsystem operation and descriptions of related hardware/software architectures;
- Programming of intelligent device with corresponding software programming utilities, which, if necessary, can be customer specified;
- For PLC or RTU based hardware, utilization of any programming language to IEC 61131-6 standards, which can comprise of ladder, function block, SFC (Sequential Function Chart), structured text, or device specific programming languages (e.g. TeleBasic, Bristol Babcock ACCOL, etc.);
- For IMC based hardware, utilization of any configuration utility, such as Allen Bradley RSLogix5000 for ControlLogix (Kinetics platform), Bosch Visualmotion (up to version 8.0) for CLC/PPC, and Emerson Axima;
- For special applications that are PC based, programming using Visual Studio products, such as Visual Basic or Visual C++ <see custom applications>;
- Pre-testing of developed applications using simulation, emulation utilities and/or live hardware; and
- Wide knowledgebase on intelligent devices, such as PLC, RTU, IMC and soft PLC based.



## Engineering Services Innovative Packaging Solutions and Factory Automation Specialists

Throughout the development process, Kraken Automation applies structured programming principles and copious documentation, leaving no unanswered questions when understanding the intent of the programmed logic is concerned. The goal for Kraken is to have the customer self-sufficient with the final programmed logic, allowing them to manage their systems with confidence.

For a more detailed list of KAI's programming knowledgebase, refer to the back of this detail sheet.

### RTU Systems:

Telesafe 6000 Basic, C, and Ladder Systems  
Bristol DPC 3310, 3330 and 3335 using ACCOL workbench

### PLC Systems:

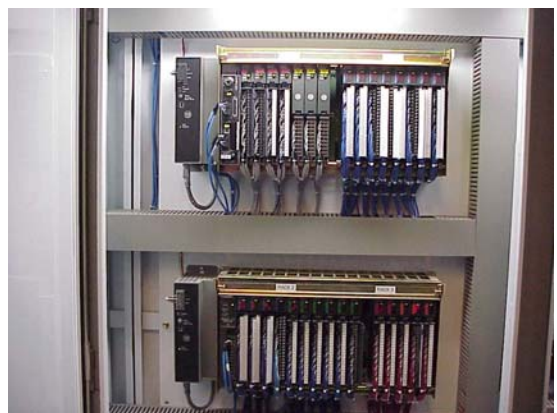
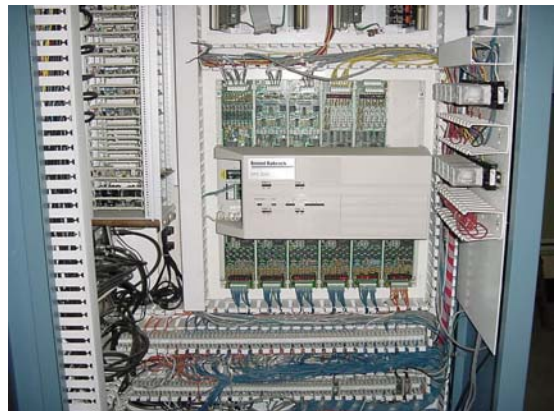
Allen Bradley Classic Systems – PLC 2/15, 2/20 and 2/30  
Allen Bradley PLC Systems – PLC 5/20 thru 5/60 with ethernet  
Allen Bradley SLC Systems – SLC 5/01 thru 5/05  
Allen Bradley LGX Systems – ControlLogix 5555 and CompactLogix (L30/35E)  
Modicon Classic Systems – 484, 584, 984  
Modicon Compact Systems – 984 Compact  
Modicon Quantum and Momentum Systems  
GE Fanuc Series 30 and 90 Platforms  
Siemens S5- and S7- Platforms  
Omron C200H, C2000H, and CQM1 Platforms  
Mitsubishi FX and FXo Series

### Soft PLC Systems

Wonderware InControl v7.11

### IMS Systems

Allen Bradley Kinetics and Ultra3000 Motion Control using RSLogix5000  
Bosch Indramat CLC/PPC using Visualmotion  
Emerson Axima using Axima Windows



[Contact us today for more information on how Kraken Automation Inc. can assist you with your Programming requirements.](#)

**Tel: (905) 336-8089 or by**

**Email: [kraken@krakenautomation.com](mailto:kraken@krakenautomation.com)**